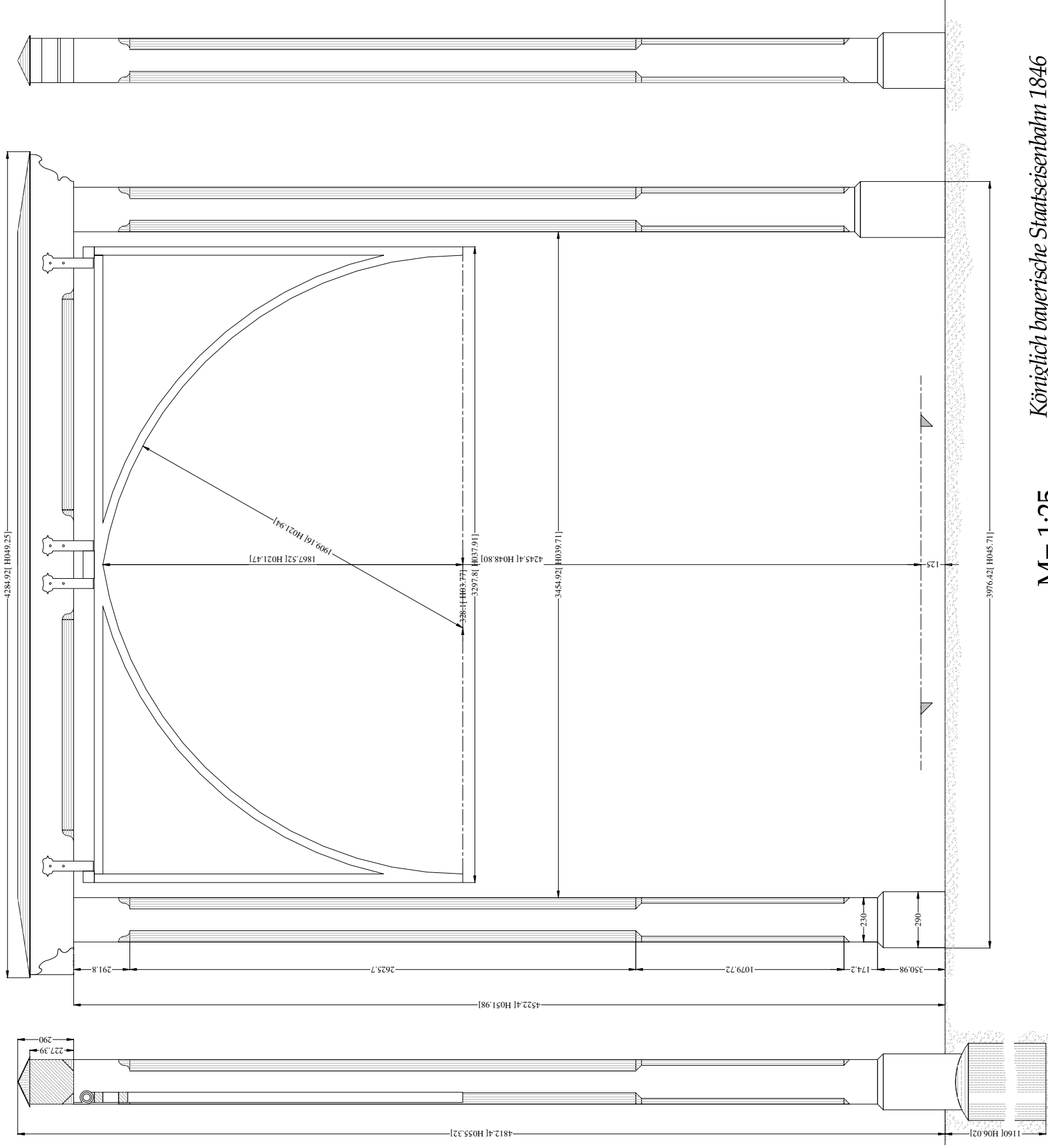
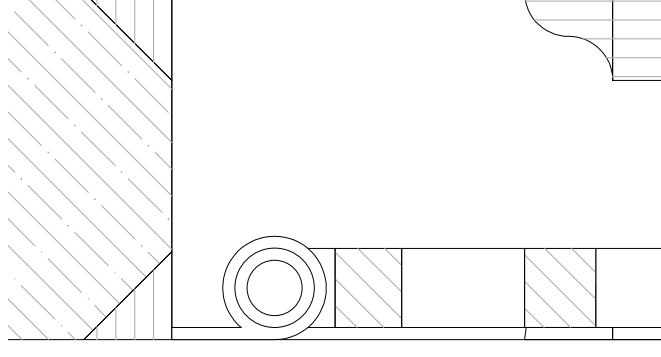


Chablone zum Abaichen der Gütertransportwagen

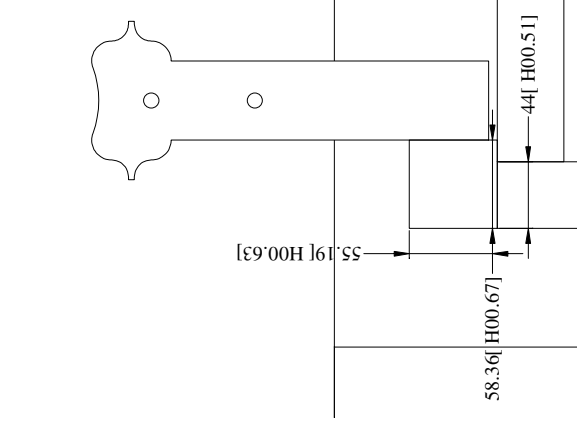


M=1:25

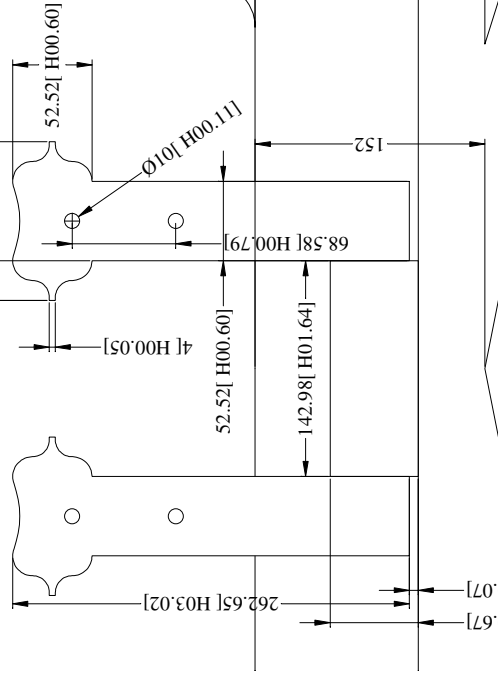
Königlich bayerische Staatseisenbahn 1846


$$M=1.87$$

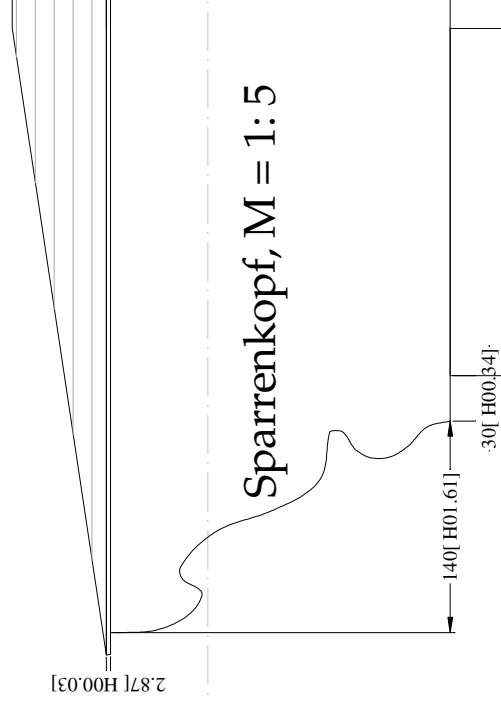
Aufhängung, Schnitt, $M = 1:5$



Aufhängung, aussen, M = 1.5



Aufhängung, mitte, $M = 1.5$



Sparrenkopf, M = 1:5